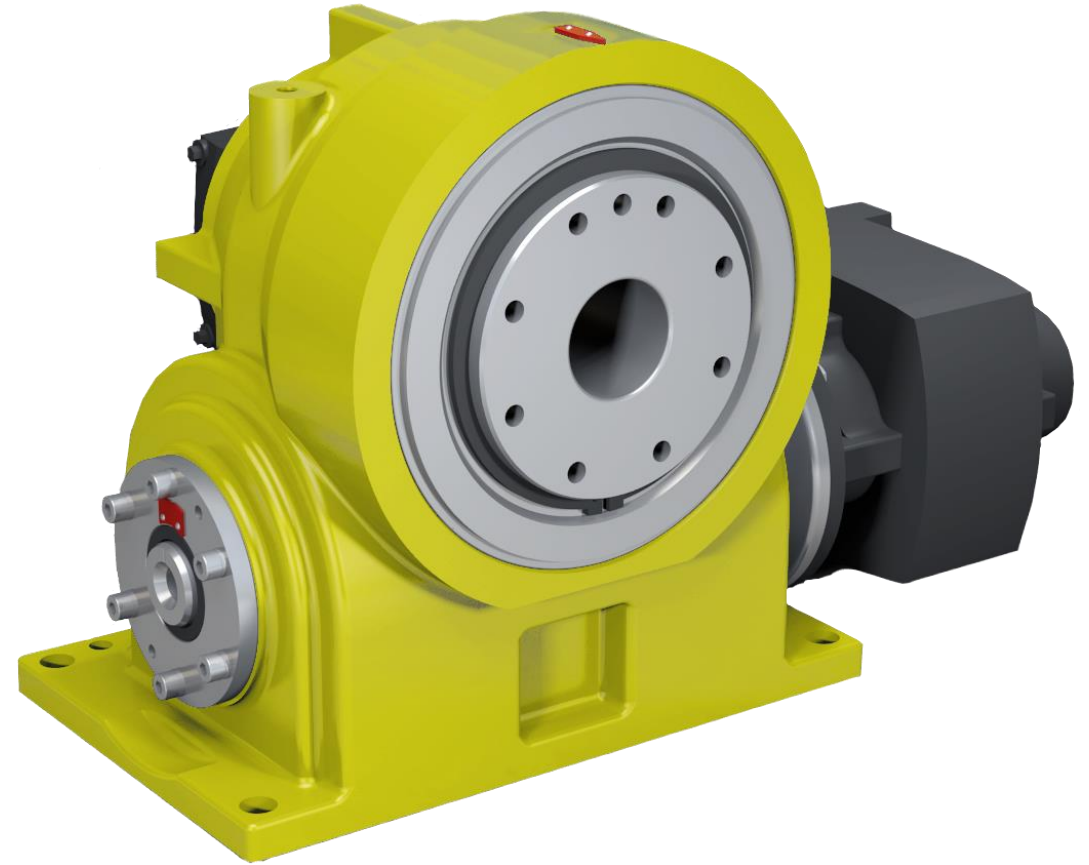


EXPERT-TÜNKERS EGV SERIES

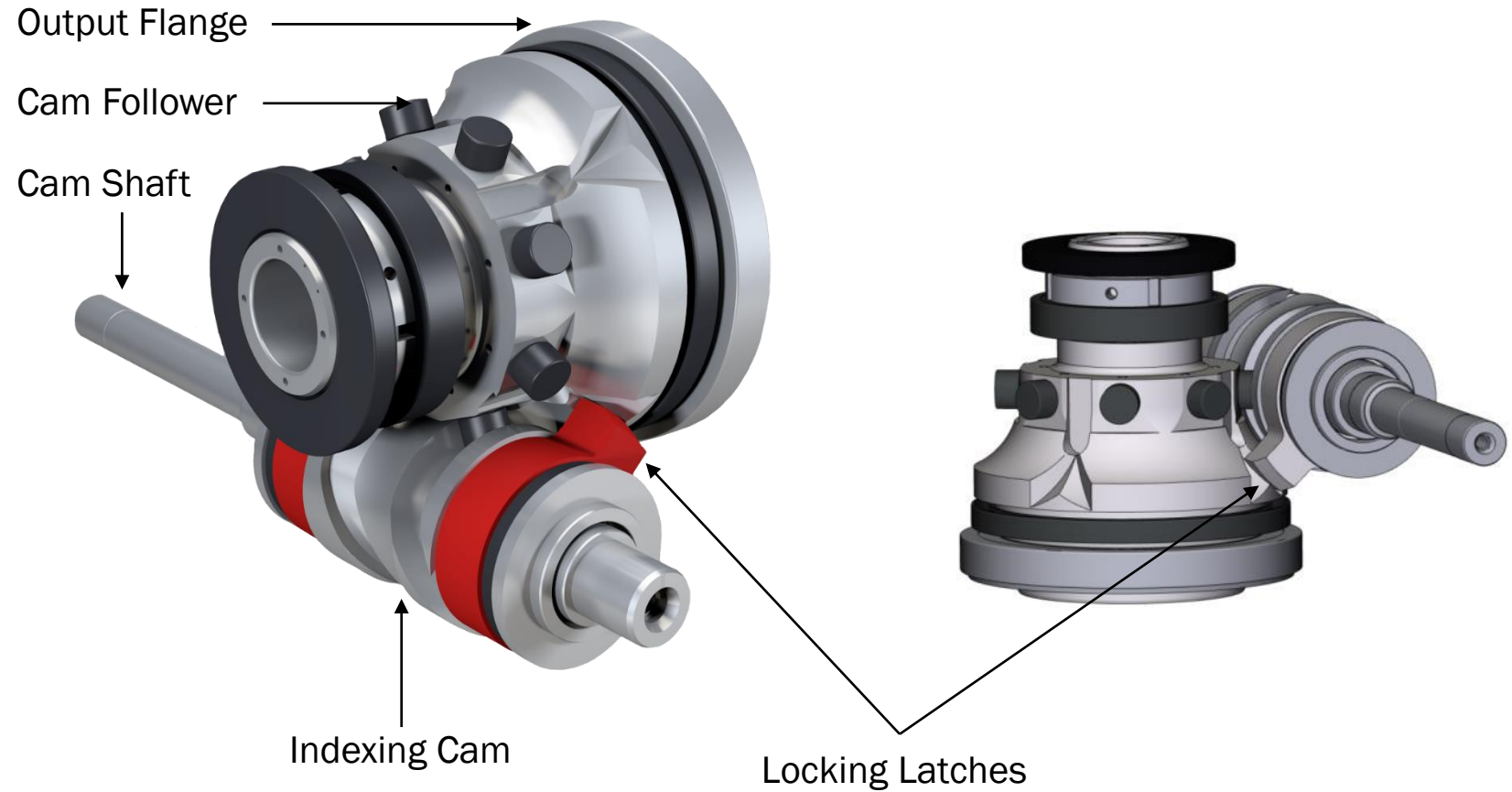
EGV | APRIL 2024



Key Advantages and Specifications

- **EGV-Series – Globoid Trunnion**
All advantages of the EXPERT globoid index drives EGD-Series are now available in an optimized Version. It has been redesigned to match the high standards of the multi-model manufacturing facilities. Available in two sizes as EGV-090 and EGV-125.
- **Compact Dimensions – More Working Space**
As a result of the redesign, the size of the EGV has been reduced to a minimum – this makes it the ideal choice as drive module for the flexible underbody clamping technology.
- **High Static Load Rigidity – No Extra Locking Device**
The EGV-Series allows high static loads in the locked working position. The patented internal locking-mechanism absorbs all forces – no additional device needed!
- **Low Cycle Times – High Dynamics**

Mechanical Design



- Reliable EXPERT Globoid-Drive
- Reduced backlash fitting to compensate high dynamic torques
- Integrated mechanical locking
- Transfer of high static moments

Application Example „Windmill“

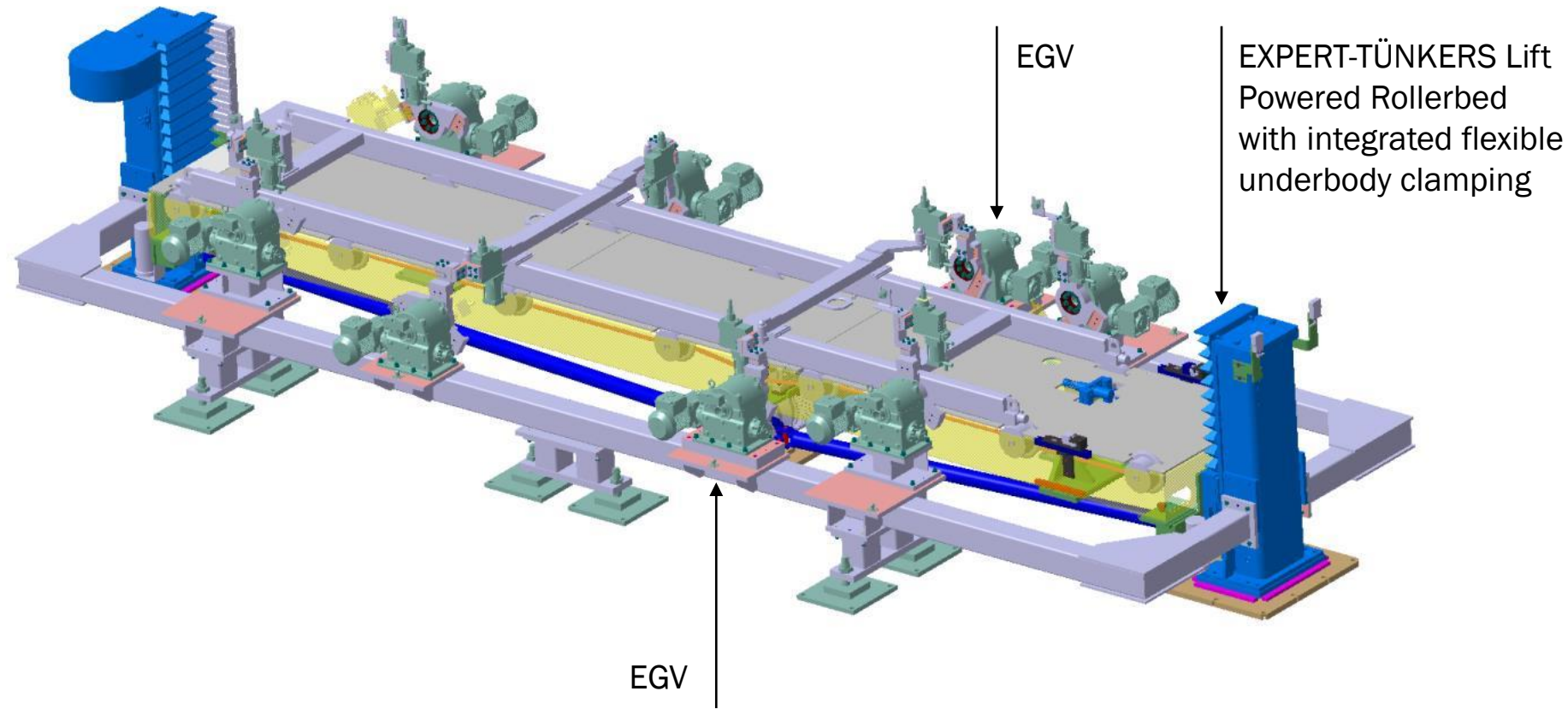
EGV-Trunnion as drive module for the flexible underbody clamping.

Precise positioning of up to four different reference point system configurations / car body types



Application Example Complete 4-Type Station Configuration

Combined station setup of EXPERT-TÜNKERS EGV and lift powered rollerbed.



Advantages Overview

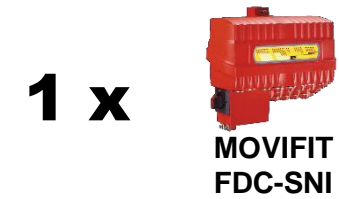
- **Compact design**
Minimal space requirements within the manufacturing lines
- **Optimized robot accessibility**
Welding gun access without additional interfering edges
- **High precision and durability**
Precise repeatable positioning due to mechanical end position locking
Reliable EXPERT-TUENKERS indexing cam technology
- **Flexible Setup**
Available with vertical or horizontal axis of rotation
Variable motor positions

Updated Decentralized Installation Concept

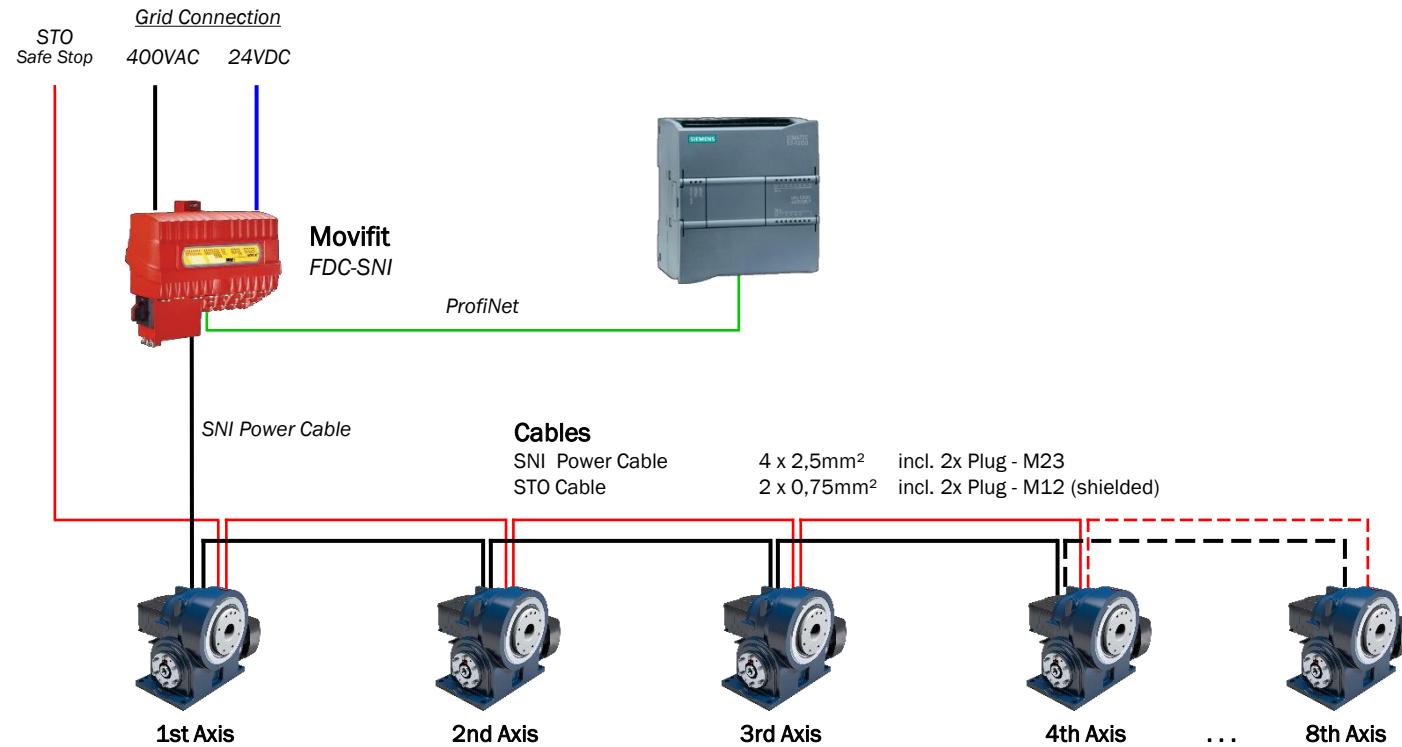
EGV Rev. A (Old Version)



EGV Rev. B (Updated Version)

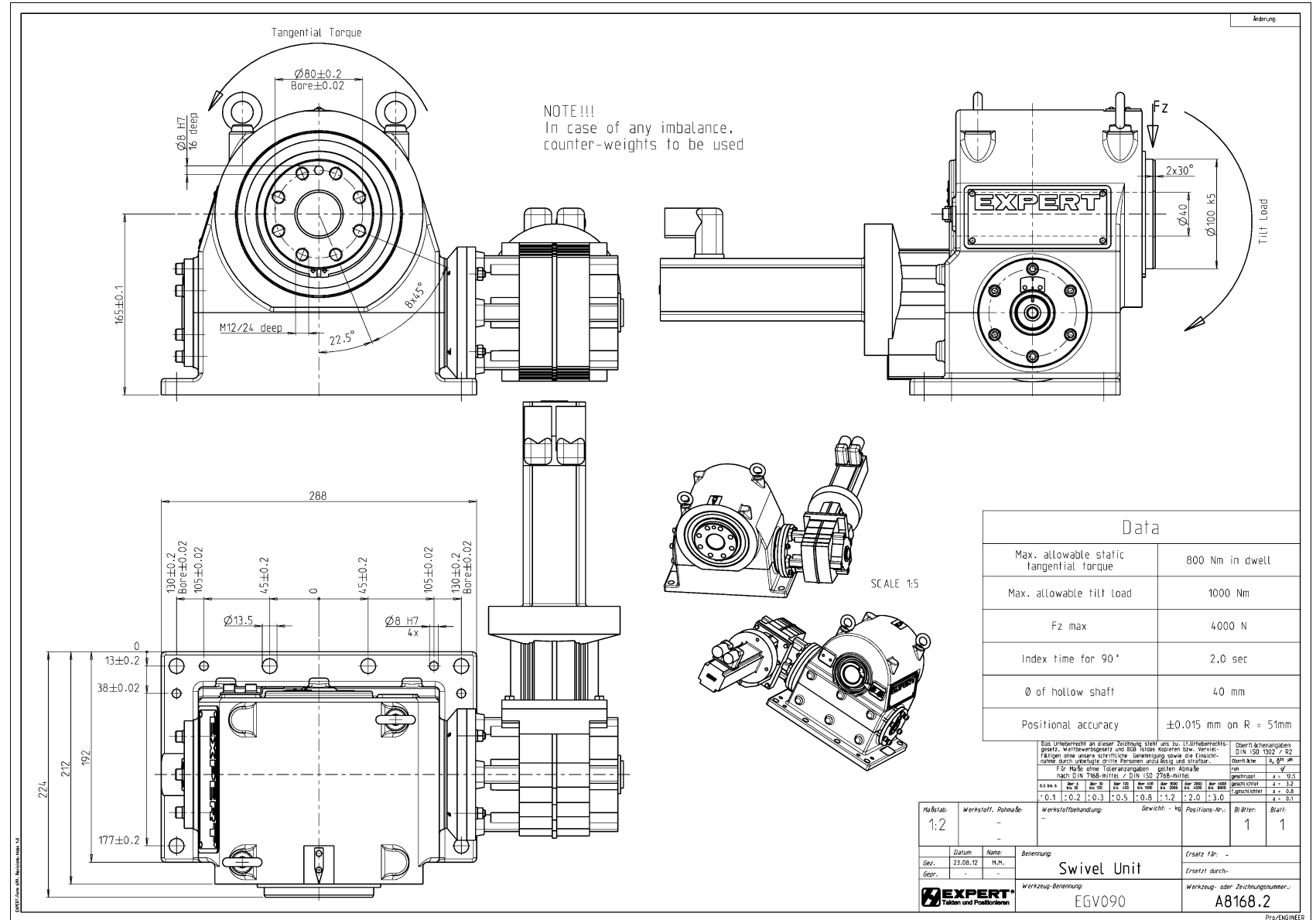


Updated Decentralized Installation Concept



- One Movifit FDC-SNI is capable of controlling up to 8 EGV-units
- Overall Plug-in connectivity
- Only two cable types needed
- Linear installation type from one EGV to another
- Maximum overall cable length of 100 meters between Movifit and last DRC Drive

Technical Data EGV 090



NOTE!!!
In case of any imbalance, counter-weights to be used

Data

Max. allowable static tangential torque	800 Nm in dwell
Max. allowable tilt load	1000 Nm
Fz max	4000 N
Index time for 90°	2,0 sec
Ø of hollow shaft	40 mm
Positional accuracy	±0.015 mm on R = 51mm

SCALE 1:5

Swivel Unit

EGV090

A8168.2

ProENGINEER

Technical Data EGV 125

Änderung:

Tangential Torque

NOTE!!
In case of any imbalance,
counter-weights to be used

Tilt Load

SCALE 1:10

Data	
Max. allowable static tangential torque	2700 Nm in dwell
Max. allowable tilt load	3450 Nm
Fz max	7500 N
Index time for 90°	1,6 sec
Ø of hollow shaft	55 mm
Positional accuracy	±0.015 mm on R = 80mm

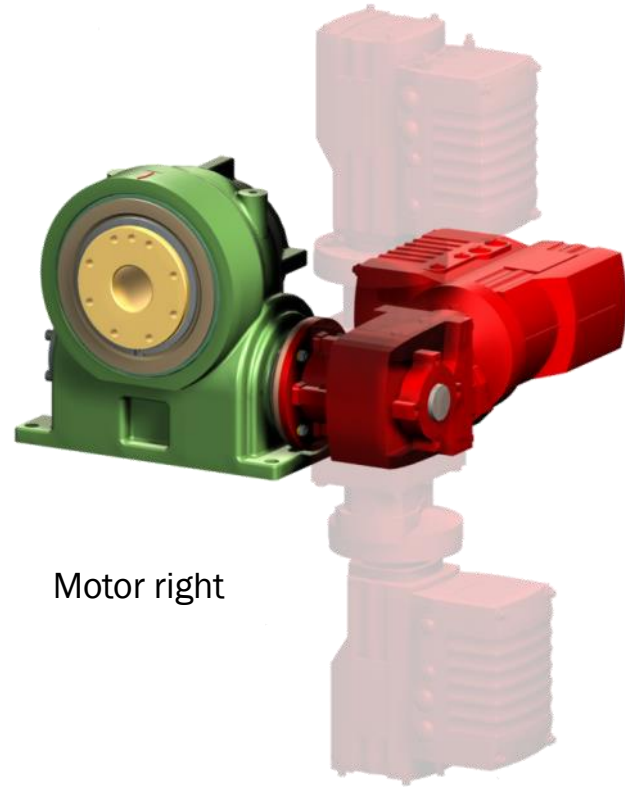
Das Urheberrecht an dieser Zeichnung steht uns zu. Lt. Urheberrechtsgesetz, Wettbewerbsgesetz und BGB ist das Kopieren bzw. Vervielfältigen ohne unsere schriftliche Genehmigung sowie die Einsichtnahme durch unbefugte dritte Personen unzulässig und strafbar.		Oberflächenangaben DIN ISO 1302 / R2
Für Maße ohne Toleranzangaben gelten Abmaße nach DIN 7168-mittel / DIN ISO 2768-mittel		roh
		geschrupt
		geschlicht
		Fgeschlicht
		a = 12,5
		a = 3,2
		a = 0,8
		a = 0,1

Maßstab:	Werkstoff, Rohmaße:	Werkstoffbehandlung:	Gewicht: - kg	Positions-Nr.:	Blätter:	Blatt:
1:5	-	-	-	-	1	1

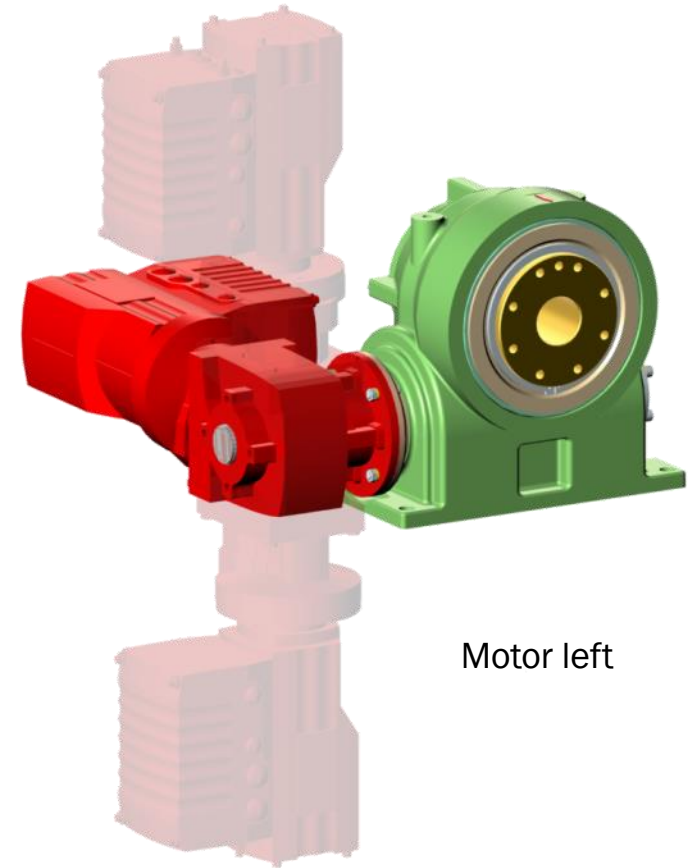
Datum:	Name:	Benennung:	Ersatz für: -
26.03.15	M.M.	Swivel Unit	Ersetzt durch: -
Gez.:	-	Werkzeug-Benennung:	Werkzeug- oder Zeichnungsnummer:
Gepr.:	-	EGV125	A9026.3

Pro:ENGINEER

Variable Motor Setup



Motor right



Motor left

References

FAW China	ca. 200 pcs
Skoda MI. Boleslav	ca. 250 pcs
Skoda MI. Boleslav (SK 260)	ca. 100 pcs
Skoda Nischni Nowgorod	ca. 90 pcs
VW China	ca. 60 pcs
VW Kaluga	ca. 80 pcs

Thank you for your
attention.

Contact:

EXPERT-TÜNKERS GmbH
Seehofstr. 56-58
64653 Lorsch

Telefon +49 (0) 6251 / 592-0
E-Mail sales@expert-tuenkers.de
Internet www.expert-tuenkers.de

